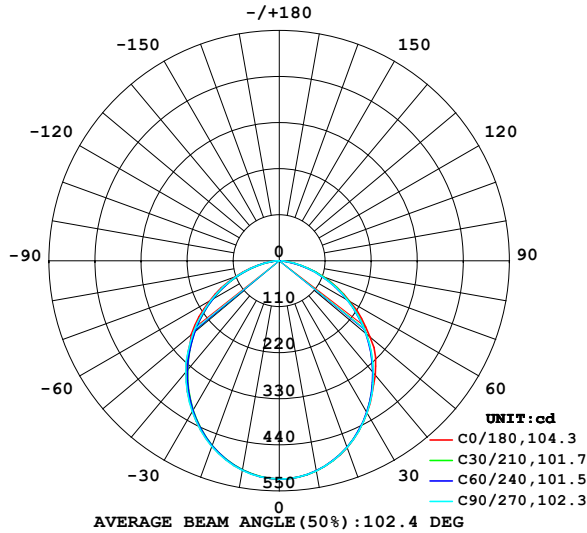


LUMINAIRE PHOTOMETRIC TEST REPORT

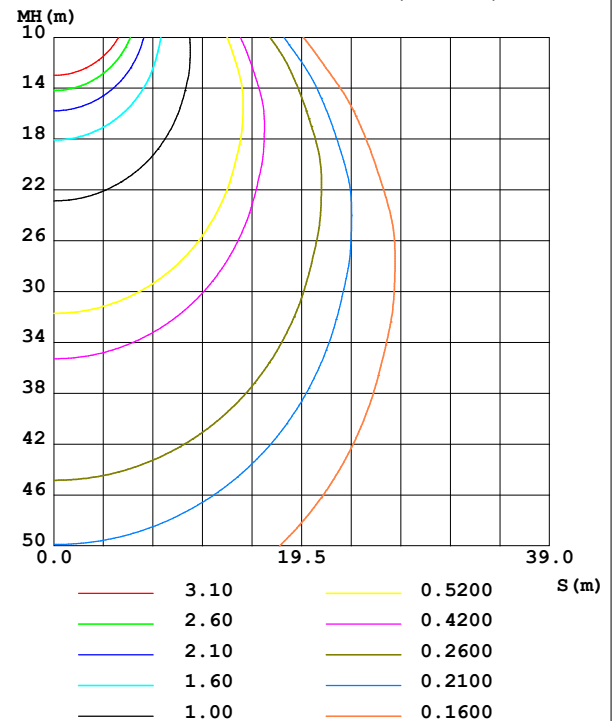
NAME: 99POMT40/BL	TYPE:	WEIGHT: 1
SPEC.:	DIM.: 35 x 75 x 334	SERIAL No.: 0
MFR.: Elmark Industries JSC	SUR.: cross	Shielding Angle:

DATA OF LAMP		PHOTOMETRIC DATA			
MODEL	99POMT40/BL	I _{max} (cd)	521.4	S/MH (C0/180)	1.19
NOMINAL POWER (W)	15	LOR (%)	83.1	S/MH (C90/270)	1.19
RATED VOLTAGE (V)	230	TOTAL FLUX (lm)	1330.3	η UP, DN (C0-180)	0.0, 41.6
NOMINAL FLUX (lm)	1600	CIE CLASS	DIRECT	η UP, DN (C180-360)	0.0, 41.5
LAMPS INSIDE	1	η up (%)	0.0	CIBSE SHR NOM	1.25
TEST VOLTAGE (V)	230	η down (%)	83.1	CIBSE SHR MAX	1.35

LUMINOUS INTENSITY DISTRIBUTION DIAGRAM



C0 PLANE ISOLUX DIAGRAM (UNIT:lx)



C Range: 0 - 360DEG
C Interval: 10.0DEG
Test Speed: HIGH
Temperature: 25.3°C
Operators:
Test Date: 15 November 2022

γ Range: 0 - 90DEG
γ Interval: 2.5DEG
Test System: EVERFINE GO-2000A_V1 SYSTEM V2.00.456
Humidity: 65.0%
Test Distance: 6.265m [K=1.0000]
Remarks:

ZONAL FLUX DIAGRAM

ZONAL FLUX DIAGRAM:

γ	C0	C45	C90	C135	C180	C225	C270	C315	γ	Φ zone	Φ total	%lum, lamp
10	509.8	509.6	509.8	509.2	508.0	507.3	508.3	509.6	0- 10	49.17	49.17	3.7,3.07
20	474.8	473.8	474.5	473.9	471.3	469.2	471.8	474.9	10- 20	139.1	188.3	14.2,11.8
30	419.8	418.0	419.8	419.6	415.5	411.7	416.2	425.3	20- 30	206.0	394.3	29.6,24.6
40	357.4	348.0	350.1	358.8	346.4	340.5	348.0	362.8	30- 40	241.6	635.9	47.8,39.7
50	282.7	270.6	271.1	282.1	274.3	263.1	268.6	284.5	40- 50	242.6	878.6	66,54.9
60	194.2	189.8	188.7	196.5	193.1	183.8	187.9	202.4	50- 60	209.0	1088	81.7,68
70	110.9	109.4	108.0	116.2	110.6	105.7	108.6	120.2	60- 70	149.8	1237	93,77.3
80	37.24	35.83	35.17	43.68	37.32	35.04	37.20	46.86	70- 80	77.75	1315	98.9,82.2
90	1.583	1.094	6.330	0.9147	1.439	0.9323	2.929	0.7129	80- 90	15.26	1330	100,83.1
100									90-100			
110									100-110			
120									110-120			
130									120-130			
140									130-140			
150									140-150			
160									150-160			
170									160-170			
180									170-180			
DEG	LUMINOUS INTENSITY:cd									UNIT:lm		

Conical surface Flux(90deg): 759.37 lm

%lum = 57.1%
%lamp = 47.5%

Conical surface Flux(130deg): 1170.9 lm

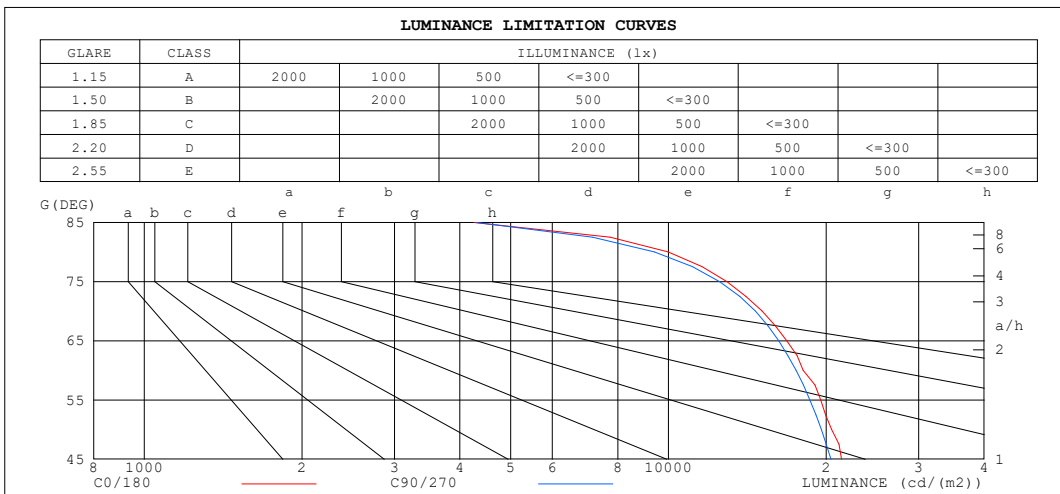
%lum = 88.0%
%lamp = 73.2%

C Range: 0 - 360DEG
C Interval: 10.0DEG
Test Speed: HIGH
Temperature:25.3°C
Operators:
Test Date:15 November 2022

γ Range: 0 - 90DEG
 γ Interval: 2.5DEG
Test System:EVERFINE GO-2000A_V1 SYSTEM V2.00.456
Humidity:65.0%
Test Distance:6.265m [K=1.0000]
Remarks:

LUMINANCE LIMITATION CURVES

NAME: 99POMT40/BL	TYPE:	WEIGHT: 1
SPEC.:	DIM.: 35 x 75 x 334	SERIAL No.: 0
MFR.: Elmark Industries JSC	SUR.: cross	Shielding Angle:



LUMINANCE cd/(m2)		
G (DEG)	C0/180	C90/270
85	4251	4293
80	9976	9394
75	12920	12521
70	15089	14654
65	16814	16228
60	18069	17504
55	19506	18616
50	20460	19564
45	21398	20421

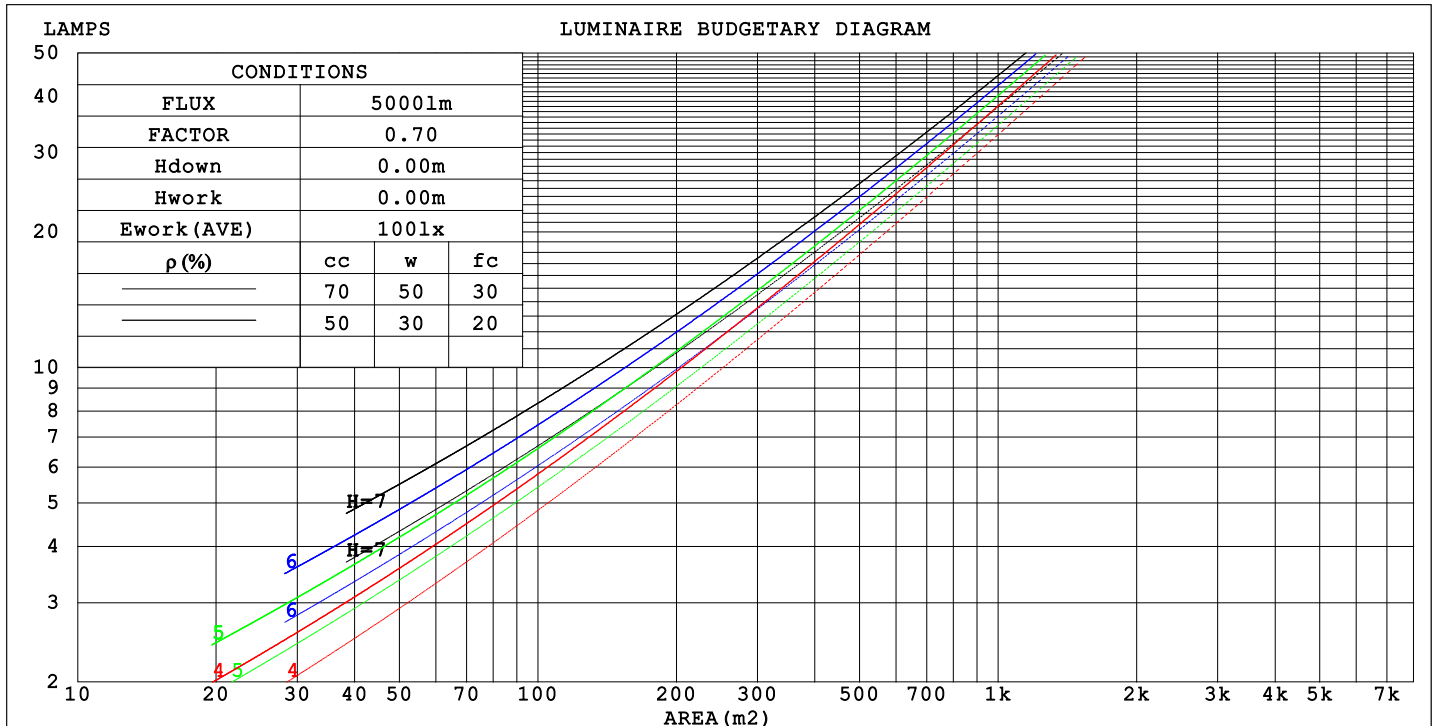
C Range: 0 - 360DEG
 C Interval: 10.0DEG
 Test Speed: HIGH
 Temperature: 25.3°C
 Operators:
 Test Date: 15 November 2022

γ Range: 0 - 90DEG
 γ Interval: 2.5DEG
 Test System: EVERFINE GO-2000A_V1 SYSTEM V2.00.456
 Humidity: 65.0%
 Test Distance: 6.265m [K=1.0000]
 Remarks:

CU AND LUMINAIRE BUDGETARY ESTIMATE DIAGRAM

NAME: 99POMT40/BL	TYPE:	WEIGHT: 1
SPEC.:	DIM.: 35 x 75 x 334	SERIAL No.: 0
MFR.: Elmark Industries JSC	SUR.: cross	Shielding Angle:

pcc	80%			70%			50%			30%			10%			0
pw	50%	30%	10%	50%	30%	10%	50%	30%	10%	50%	30%	10%	50%	30%	10%	0
pfc	20%			20%			20%			20%			20%			0
RCR	RCR:Room Cavity Ratio															



C Range: 0 - 360DEG
C Interval: 10.0DEG
Test Speed: HIGH
Temperature:25.3°C
Operators:
Test Date:15 November 2022

γ Range: 0 - 90DEG
γ Interval: 2.5DEG
Test System:EVERFINE GO-2000A_V1 SYSTEM V2.00.456
Humidity:65.0%
Test Distance:6.265m [K=1.0000]
Remarks:

WEC AND CCEC

NAME: 99POMT40/BL	TYPE:	WEIGHT: 1
SPEC.:	DIM.: 35 x 75 x 334	SERIAL No.: 0
MFR.: Elmark Industries JSC	SUR.: cross	Shielding Angle:

pcc	80%			70%			50%			30%			10%			0
pw	50%	30%	10%	50%	30%	10%	50%	30%	10%	50%	30%	10%	50%	30%	10%	0
pfc	20%			20%			20%			20%			20%			0
RCR	RCR:Room Cavity Ratio						Wall Exitance Coeffcients(WEC)									
0.0																
1.0	.243	.138	.044	.237	.135	.043	.226	.130	.041	.216	.124	.040	.207	.120	.039	
2.0	.231	.127	.039	.226	.125	.038	.217	.121	.037	.208	.117	.036	.200	.113	.036	
3.0	.216	.115	.034	.211	.113	.034	.203	.110	.033	.195	.107	.033	.188	.104	.032	
4.0	.200	.104	.031	.196	.103	.030	.189	.100	.030	.182	.098	.029	.175	.095	.029	
5.0	.186	.095	.027	.183	.094	.027	.176	.092	.027	.170	.089	.027	.164	.088	.026	
6.0	.173	.087	.025	.170	.086	.025	.164	.084	.024	.158	.082	.024	.153	.081	.024	
7.0	.162	.080	.023	.159	.079	.023	.153	.078	.022	.148	.076	.022	.144	.075	.022	
8.0	.151	.074	.021	.149	.073	.021	.144	.072	.021	.139	.071	.020	.135	.069	.020	
9.0	.142	.069	.019	.140	.068	.019	.135	.067	.019	.131	.066	.019	.128	.065	.019	
10.0	.134	.064	.018	.132	.064	.018	.128	.063	.018	.124	.062	.018	.121	.061	.017	

pcc	80%			70%			50%			30%			10%			0
pw	50%	30%	10%	50%	30%	10%	50%	30%	10%	50%	30%	10%	50%	30%	10%	0
pfc	20%			20%			20%			20%			20%			0
RCR	RCR:Room Cavity Ratio						Ceiling Cavity Exitance Coefficients (CCEC)									
0.0	.158	.158	.158	.135	.135	.135	.092	.092	.092	.053	.053	.053	.017	.017	.017	
1.0	.149	.130	.113	.127	.112	.097	.087	.077	.067	.050	.044	.039	.016	.014	.013	
2.0	.142	.110	.083	.121	.094	.072	.083	.065	.050	.048	.038	.029	.015	.012	.010	
3.0	.135	.095	.063	.116	.082	.055	.080	.057	.038	.046	.033	.023	.015	.011	.007	
4.0	.129	.084	.049	.110	.072	.043	.076	.050	.030	.044	.030	.018	.014	.010	.006	
5.0	.123	.075	.040	.105	.065	.035	.073	.045	.025	.042	.027	.015	.014	.009	.005	
6.0	.117	.068	.033	.100	.059	.029	.069	.041	.020	.040	.024	.012	.013	.008	.004	
7.0	.111	.062	.028	.096	.054	.025	.066	.038	.017	.038	.022	.010	.012	.007	.003	
8.0	.106	.058	.024	.091	.050	.021	.063	.035	.015	.037	.021	.009	.012	.007	.003	
9.0	.101	.053	.021	.087	.046	.019	.060	.033	.013	.035	.019	.008	.011	.006	.003	
10.0	.096	.050	.019	.083	.043	.016	.058	.030	.012	.034	.018	.007	.011	.006	.002	

C Range: 0 - 360DEG
C Interval: 10.0DEG
Test Speed: HIGH
Temperature:25.3°C
Operators:
Test Date:15 November 2022

γ Range: 0 - 90DEG
γ Interval: 2.5DEG
Test System:EVERFINE GO-2000A_V1 SYSTEM V2.00.456
Humidity:65.0%
Test Distance:6.265m [K=1.0000]
Remarks:

UGR(Unified Glare Rating) Table

NAME: 99POMT40/BL					TYPE:		WEIGHT: 1				
SPEC.:					DIM.: 35 x 75 x 334		SERIAL No.: 0				
MFR.: Elmark Industries JSC					SUR.: cross		Shielding Angle:				
ceiling/cavity	0.7	0.7	0.5	0.5	0.3	0.7	0.7	0.5	0.5	0.3	
walls	0.5	0.3	0.5	0.3	0.3	0.5	0.3	0.5	0.3	0.3	
working plane	0.2	0.2	0.2	0.2	0.2	0.2	0.2	0.2	0.2	0.2	
Room dimensions		Viewed crosswise					Viewed endwise				
x = 2H	y = 2H	21.4	22.9	21.7	23.1	23.3	21.2	22.7	21.5	22.9	23.1
	3H	22.7	24.1	23.0	24.3	24.5	22.5	23.8	22.8	24.1	24.3
	4H	23.1	24.4	23.5	24.7	24.9	22.9	24.2	23.2	24.4	24.7
	6H	23.4	24.6	23.7	24.9	25.2	23.1	24.3	23.5	24.6	24.9
	8H	23.4	24.6	23.8	24.9	25.2	23.1	24.3	23.5	24.6	24.9
	12H	23.4	24.5	23.7	24.8	25.1	23.1	24.2	23.5	24.5	24.8
4H	2H	21.9	23.2	22.2	23.4	23.7	21.8	23.1	22.1	23.3	23.6
	3H	23.4	24.5	23.7	24.8	25.1	23.2	24.3	23.5	24.6	24.9
	4H	23.9	25.0	24.3	25.3	25.6	23.7	24.7	24.1	25.1	25.4
	6H	24.3	25.2	24.7	25.5	25.9	24.0	24.9	24.4	25.3	25.7
	8H	24.3	25.2	24.8	25.6	25.9	24.1	24.9	24.5	25.3	25.7
	12H	24.3	25.1	24.8	25.5	25.9	24.0	24.8	24.5	25.2	25.6
8H	4H	24.1	25.0	24.5	25.3	25.7	23.9	24.8	24.3	25.1	25.5
	6H	24.5	25.3	25.0	25.7	26.1	24.3	25.0	24.8	25.4	25.8
	8H	24.6	25.3	25.1	25.7	26.1	24.4	25.0	24.8	25.4	25.9
	12H	24.6	25.2	25.1	25.6	26.1	24.4	24.9	24.9	25.4	25.8
12H	4H	24.1	24.9	24.5	25.3	25.7	23.9	24.7	24.3	25.1	25.5
	6H	24.6	25.2	25.0	25.6	26.1	24.3	24.9	24.8	25.4	25.8
	8H	24.7	25.2	25.1	25.6	26.1	24.4	24.9	24.9	25.4	25.9
Variations with the observer position at spacings(CIE Pub.117):											
S = 1.0H		+ 0.2 / - 0.2					+ 0.2 / - 0.2				
1.5H		+ 0.1 / - 0.3					+ 0.2 / - 0.3				
2.0H		+ 0.4 / - 0.3					+ 0.3 / - 0.3				

CIE Pub.117, 1600 lm Total Lamp Luminous Flux Correct (8log(F/F0) = 1.6)
Area: 0.021555 m2

C Range: 0 - 360DEG
C Interval: 10.0DEG
Test Speed: HIGH
Temperature:25.3°C
Operators:
Test Date:15 November 2022

γ Range: 0 - 90DEG
γ Interval: 2.5DEG
Test System:EVERFINE GO-2000A_V1 SYSTEM V2.00.456
Humidity:65.0%
Test Distance:6.265m [K=1.0000]
Remarks:

UTILIZATION FACTORS TABLE

NAME: 99POMT40/BL	TYPE:	WEIGHT: 1
SPEC.:	DIM.: 35 x 75 x 334	SERIAL No.: 0
MFR.: Elmark Industries JSC	SUR.: cross	Shielding Angle:

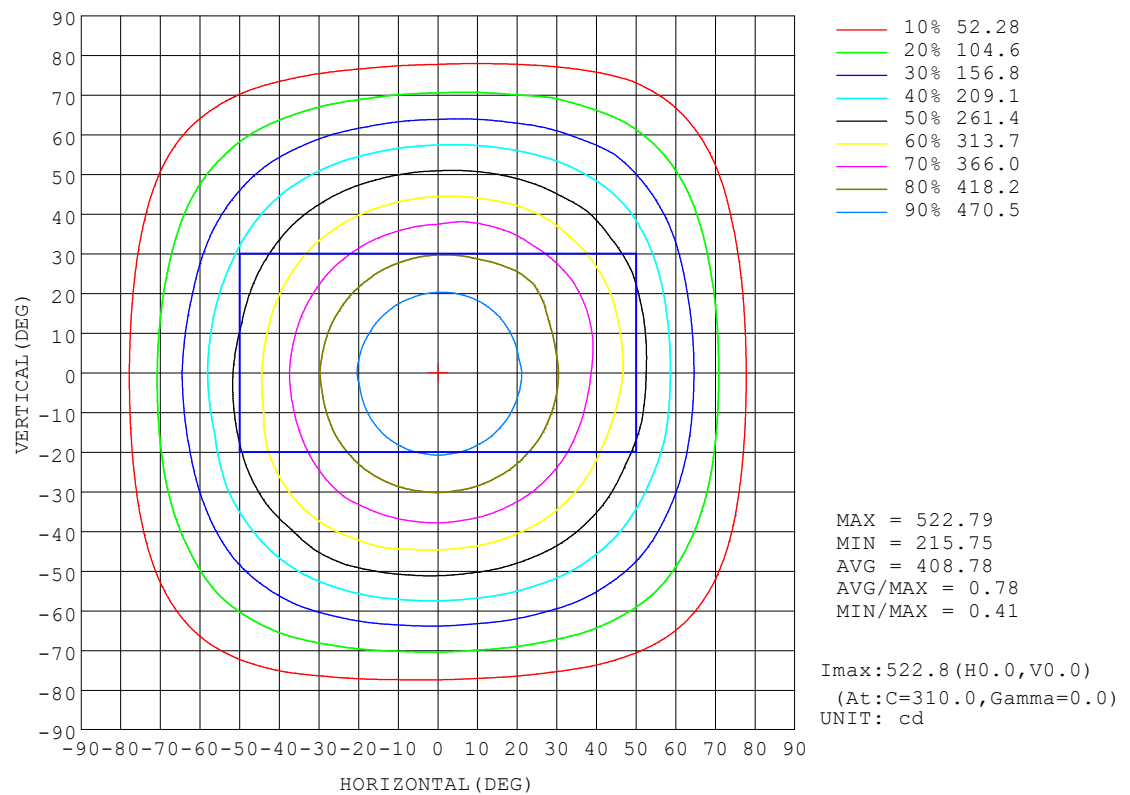
REFLECTANCE										
Ceiling	0.8	0.8	0.8	0.7	0.7	0.7	0.5	0.5	0.5	0
Walls	0.7	0.5	0.3	0.7	0.5	0.3	0.7	0.5	0.3	0
Working plane	0.2	0.2	0.2	0.2	0.2	0.2	0.2	0.2	0.2	0
ROOM INDEX	UTILIZATION FACTORS (PERCENT) $k(RI) \times RCR = 5$									
$k = 0.60$	49	40	34	49	40	34	48	39	34	29
0.80	58	48	42	57	48	42	55	47	42	36
1.00	65	56	50	64	55	50	62	56	49	44
1.25	70	62	56	69	62	56	67	60	55	50
1.50	75	67	61	73	66	61	71	65	60	54
2.00	80	73	68	79	72	68	76	71	66	60
2.50	83	77	72	82	76	72	78	74	70	63
3.00	86	80	76	84	79	75	81	77	73	67
4.00	89	85	81	87	83	80	84	80	78	70
5.00	91	87	84	89	86	83	85	83	80	73
ROOM INDEX	UF(total)									Direct
According to DIN EN 13032-2 2004			Suspended					SHRNOM = 1.25		

C Range: 0 - 360DEG
C Interval: 10.0DEG
Test Speed: HIGH
Temperature: 25.3°C
Operators:
Test Date: 15 November 2022

γ Range: 0 - 90DEG
γ Interval: 2.5DEG
Test System: EVERFINE GO-2000A_V1 SYSTEM V2.00.456
Humidity: 65.0%
Test Distance: 6.265m [K=1.0000]
Remarks:

ISOCANDELA DIAGRAM

NAME: 99POMT40/BL	TYPE:	WEIGHT: 1
SPEC.:	DIM.: 35 x 75 x 334	SERIAL No.: 0
MFR.: Elmark Industries JSC	SUR.: cross	Shielding Angle:

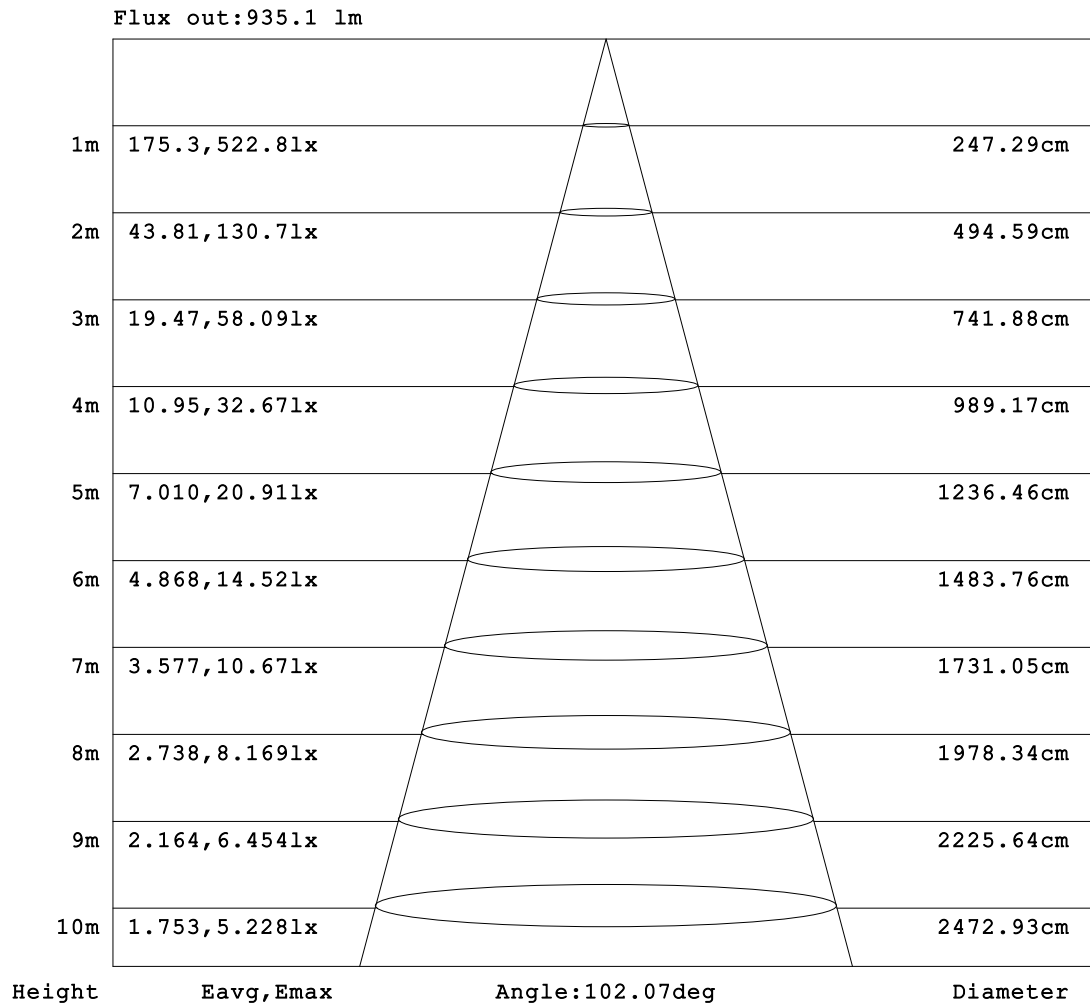


C Range: 0 - 360DEG
 C Interval: 10.0DEG
 Test Speed: HIGH
 Temperature:25.3°C
 Operators:
 Test Date:15 November 2022

γ Range: 0 - 90DEG
 γ Interval: 2.5DEG
 Test System:EVERFINE GO-2000A_V1 SYSTEM V2.00.456
 Humidity:65.0%
 Test Distance:6.265m [K=1.0000]
 Remarks:

AAI Figure

NAME: 99POMT40/BL	TYPE:	WEIGHT: 1
SPEC.:	DIM.: 35 x 75 x 334	SERIAL No.: 0
MFR.: Elmark Industries JSC	SUR.: cross	Shielding Angle:



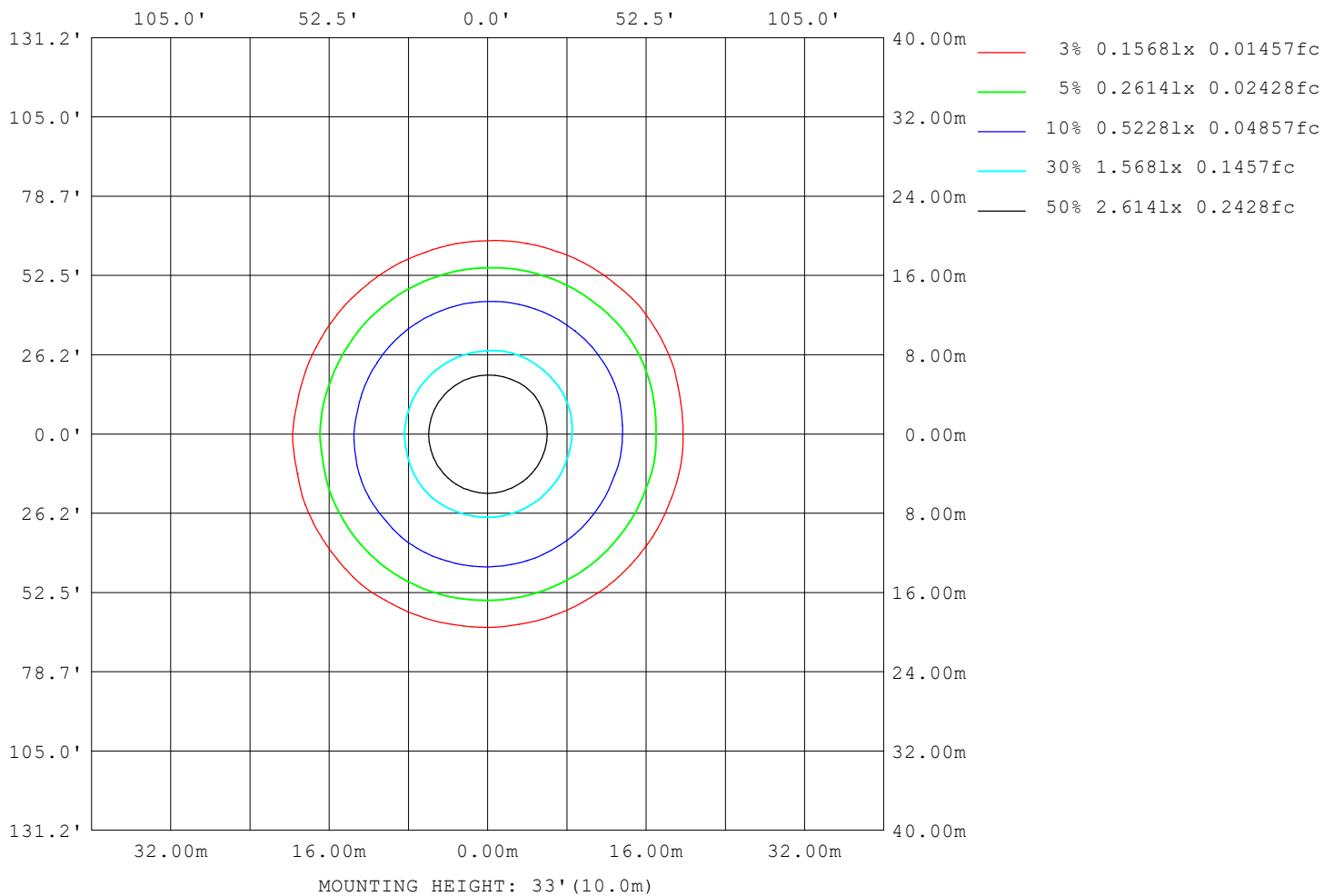
Note: The Curves indicate the illuminated area and the average illumination when the luminaire is at different distance.

C Range: 0 - 360DEG
 C Interval: 10.0DEG
 Test Speed: HIGH
 Temperature: 25.3°C
 Operators:
 Test Date: 15 November 2022

γ Range: 0 - 90DEG
 γ Interval: 2.5DEG
 Test System: EVERFINE GO-2000A_V1 SYSTEM V2.00.456
 Humidity: 65.0%
 Test Distance: 6.265m [K=1.0000]
 Remarks:

ISOLUX DIAGRAM

NAME: 99POMT40/BL	TYPE:	WEIGHT: 1
SPEC.:	DIM.: 35 x 75 x 334	SERIAL No.: 0
MFR.: Elmark Industries JSC	SUR.: cross	Shielding Angle:



C Range: 0 - 360DEG
C Interval: 10.0DEG
Test Speed: HIGH
Temperature: 25.3°C
Operators:
Test Date: 15 November 2022

γ Range: 0 - 90DEG
γ Interval: 2.5DEG
Test System: EVERFINE GO-2000A_V1 SYSTEM V2.00.456
Humidity: 65.0%
Test Distance: 6.265m [K=1.0000]
Remarks:

LED Avg.L Report

NAME: 99POMT40/BL	TYPE:	WEIGHT: 1
SPEC.:	DIM.: 35 x 75 x 334	SERIAL No.: 0
MFR.: Elmark Industries JSC	SUR.: cross	Shielding Angle:

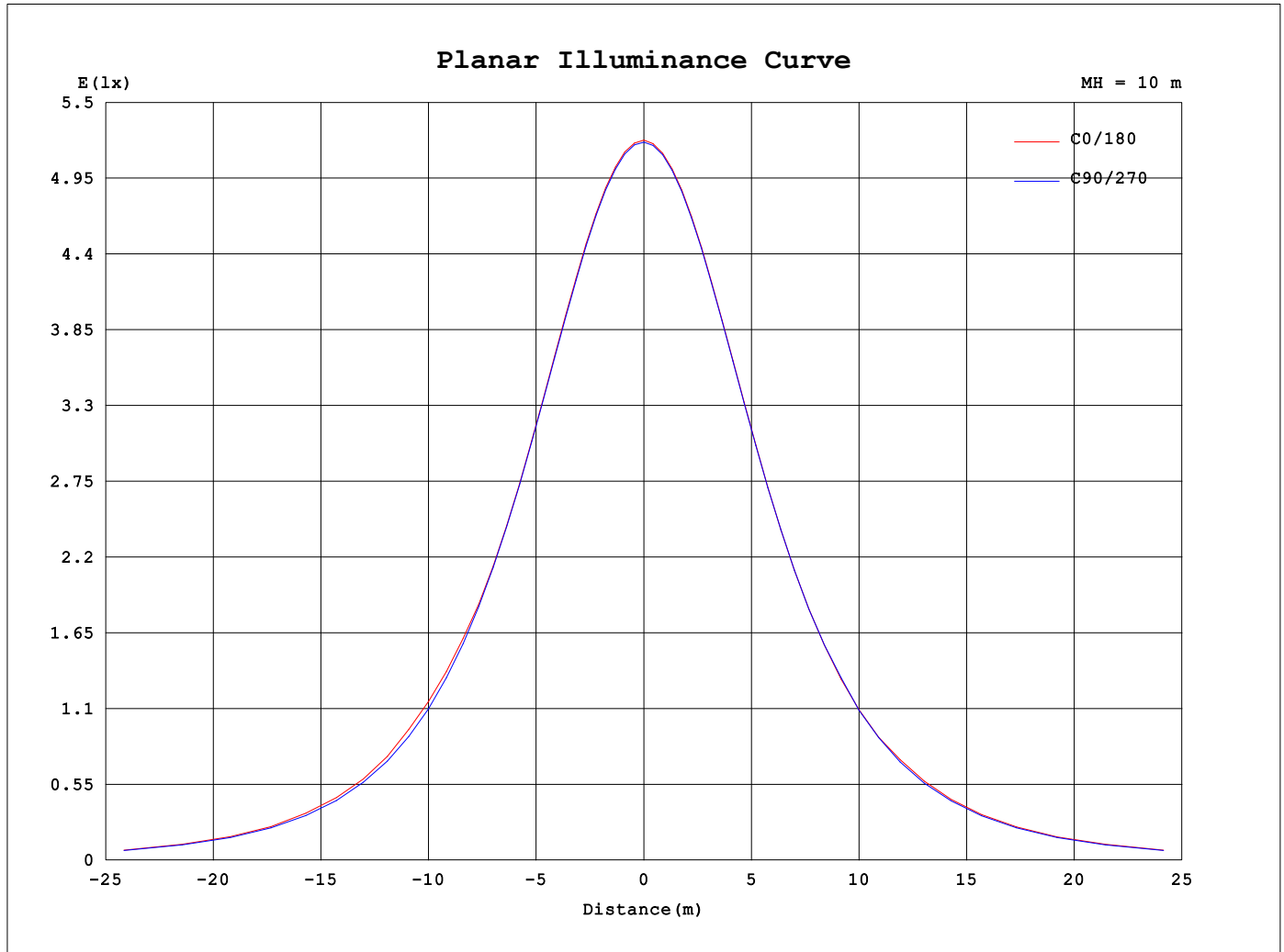
AvgL	cd/m2
L_0~180 (65) av	16760
L_0~180 (75) av	12926
L_0~180 (85) av	4139
L_90~270 (65) av	16224
L_90~270 (75) av	12680
L_90~270 (85) av	4369
L_45 (65) av	16785
L_45 (75) av	13518
L_45 (85) av	6757

Standard: GB/T 29293-2012

C Range: 0 - 360DEG
C Interval: 10.0DEG
Test Speed: HIGH
Temperature:25.3°C
Operators:
Test Date:15 November 2022

γ Range: 0 - 90DEG
γ Interval: 2.5DEG
Test System:EVERFINE GO-2000A_V1 SYSTEM V2.00.456
Humidity:65.0%
Test Distance:6.265m [K=1.0000]
Remarks:

Planar Illuminance Curve



C Range: 0 - 360DEG
 C Interval: 10.0DEG
 Test Speed: HIGH
 Temperature: 25.3°C
 Operators:
 Test Date: 15 November 2022

γ Range: 0 - 90DEG
 γ Interval: 2.5DEG
 Test System: EVERFINE GO-2000A_V1 SYSTEM V2.00.456
 Humidity: 65.0%
 Test Distance: 6.265m [K=1.0000]
 Remarks:

```

γ Range: 0 - 90DEG
γ Interval: 2.5DEG
Test System:EVERFINE GO-2000A_V1 SYSTEM V2.00.456
Humidity:65.0%
Test Distance:6.265m [K=1.0000]
Remarks:

```

```

γ Range: 0 - 90DEG
γ Interval: 2.5DEG
Test System:EVERFINE GO-2000A_V1 SYSTEM V2.00.456
Humidity:65.0%
Test Distance:6.265m [K=1.0000]
Remarks:

```